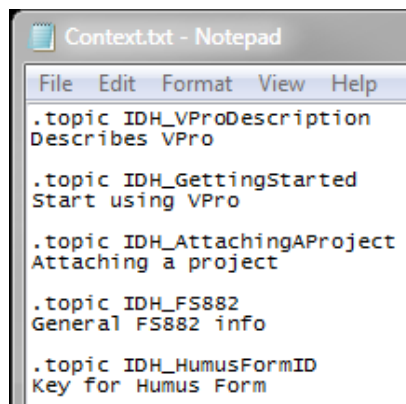


Creating Basic Help for VPro

We need a strategy before we go charging off into this task. It is very easy to spend hours splicing things together and then have the workshop corrupt all your hard work.

The basic components of this sample help file are:

- VPro.hhp – this is your help project file
- VProTableOfContents.hhc – contents file, best not to try and manually edit this one – I speak from experience.
- .htm files – one htm file per topic. If you're using Word to create them, make sure you save them as filtered.
- Context.txt – edit this one in Notepad

A screenshot of a Notepad window titled "Context.txt - Notepad". The menu bar shows "File", "Edit", "Format", "View", and "Help". The text content is as follows:

```
.topic IDH_VProDescription
Describes VPro

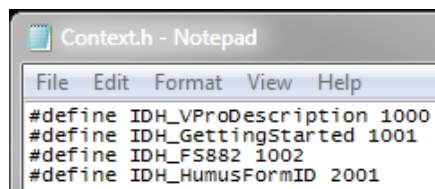
.topic IDH_GettingStarted
Start using VPro

.topic IDH_AttachingAProject
Attaching a project

.topic IDH_FS882
General FS882 info

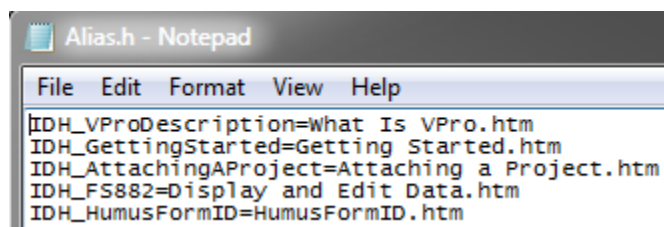
.topic IDH_HumusFormID
Key for Humus Form
```

- Context.h – this is a header file something like you'll use in linking C or C++ components. Here you'll use it to define the help files links to the VPro database. Use Notepad to edit this one.

A screenshot of a Notepad window titled "Context.h - Notepad". The menu bar shows "File", "Edit", "Format", "View", and "Help". The text content is as follows:

```
#define IDH_VProDescription 1000
#define IDH_GettingStarted 1001
#define IDH_FS882 1002
#define IDH_HumusFormID 2001
```

- Alias.h – another header file. This one provides the links between Context and the htm files.

A screenshot of a Notepad window titled "Alias.h - Notepad". The menu bar shows "File", "Edit", "Format", "View", and "Help". The text content is as follows:

```
IDH_VProDescription=What Is VPro.htm
IDH_GettingStarted=Getting Started.htm
IDH_AttachingAProject=Attaching a Project.htm
IDH_FS882=Display and Edit Data.htm
IDH_HumusFormID=HumusFormID.htm
```

So far so good. We have a handful of htm files and some component files to glue everything together. Use the HTML Workshop to compile it and we can move onto teaching VPro to use the resulting chm file.

Let's teach VPro how to use the chm file. For this example we'll open the FS882-6x4 form in design view and set a few properties. At the form level, set the help file and context Id.

Property Sheet
Selection type: Form

Form

Format Data Event Other All

Pop Up	No
Modal	No
Cycle	All Records
Ribbon Name	VPro07
Toolbar	
Shortcut Menu	No
Menu Bar	
Shortcut Menu Bar	
Help File	VPro.chm
Help Context Id	1002

Now select the control HumusForm on the Soil/Terrain tab and set the Help Context Id for this control. No need to set the help file, it will get that information from the forms property.

Property Sheet
Selection type: Combo Box

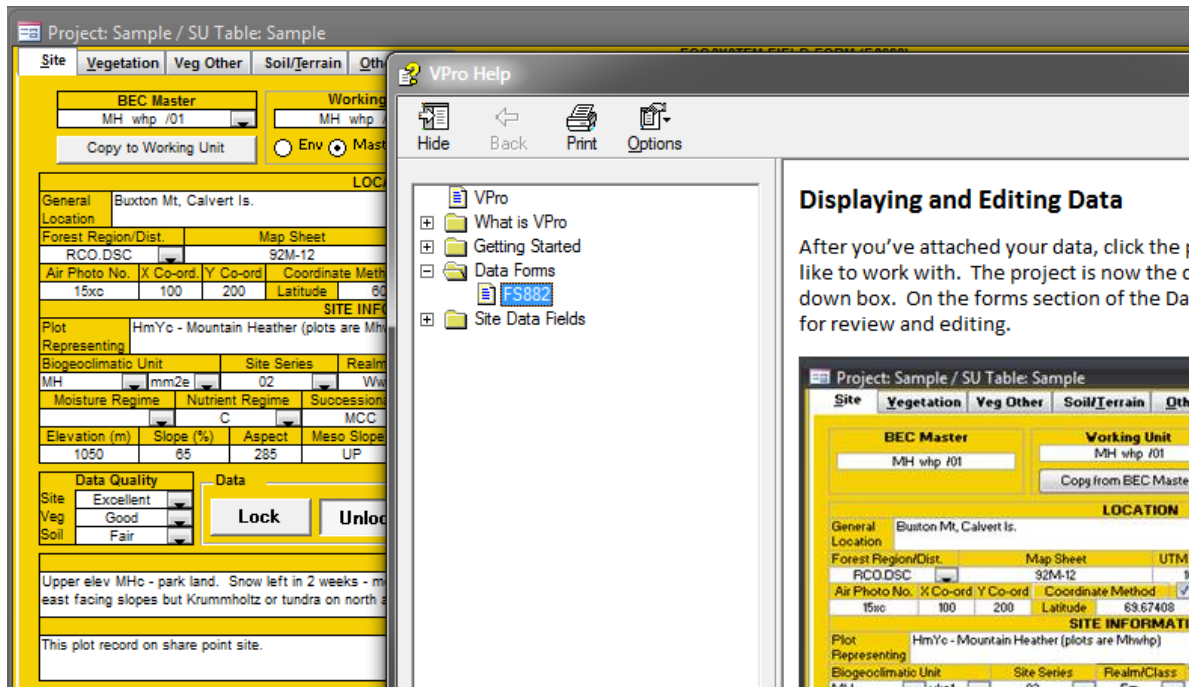
HumusForm

Format Data Event Other All

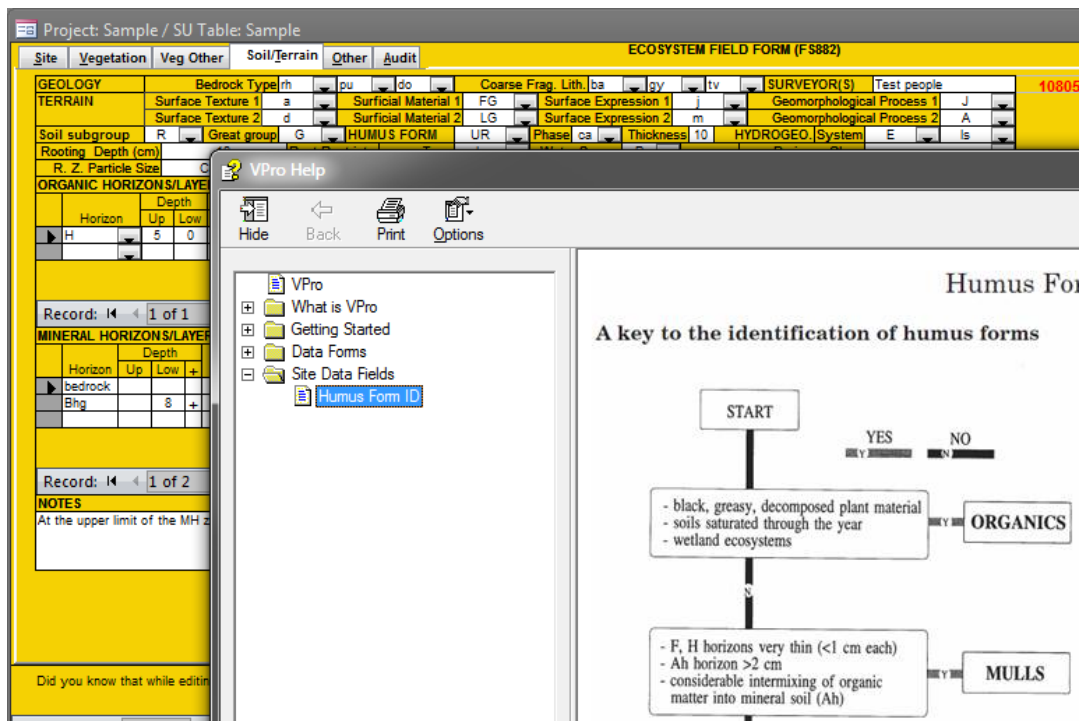
Name	HumusForm
Datasheet Caption	
ControlTip Text	
Tab Index	14
Tab Stop	Yes
Status Bar Text	
Shortcut Menu Bar	
Help Context Id	2001

Save the form and let's give this thing a try.

With the form selected press F1. VPro Help should open and the proper content displayed.



Now, with your cursor in the Humus Form field press F1. Bingo – everything you want to know about humus form but were afraid to ask.



Of course there is a lot more to creating **proper** help files than these few steps.