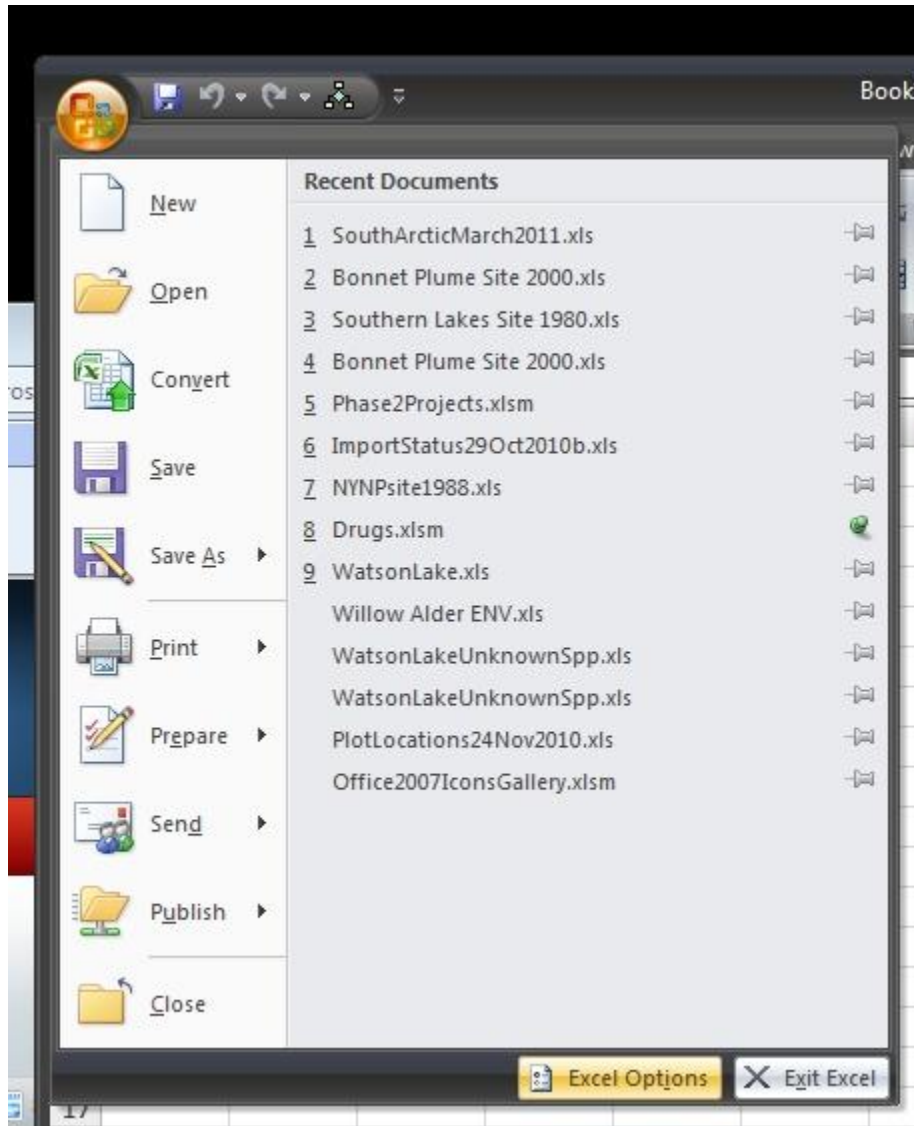
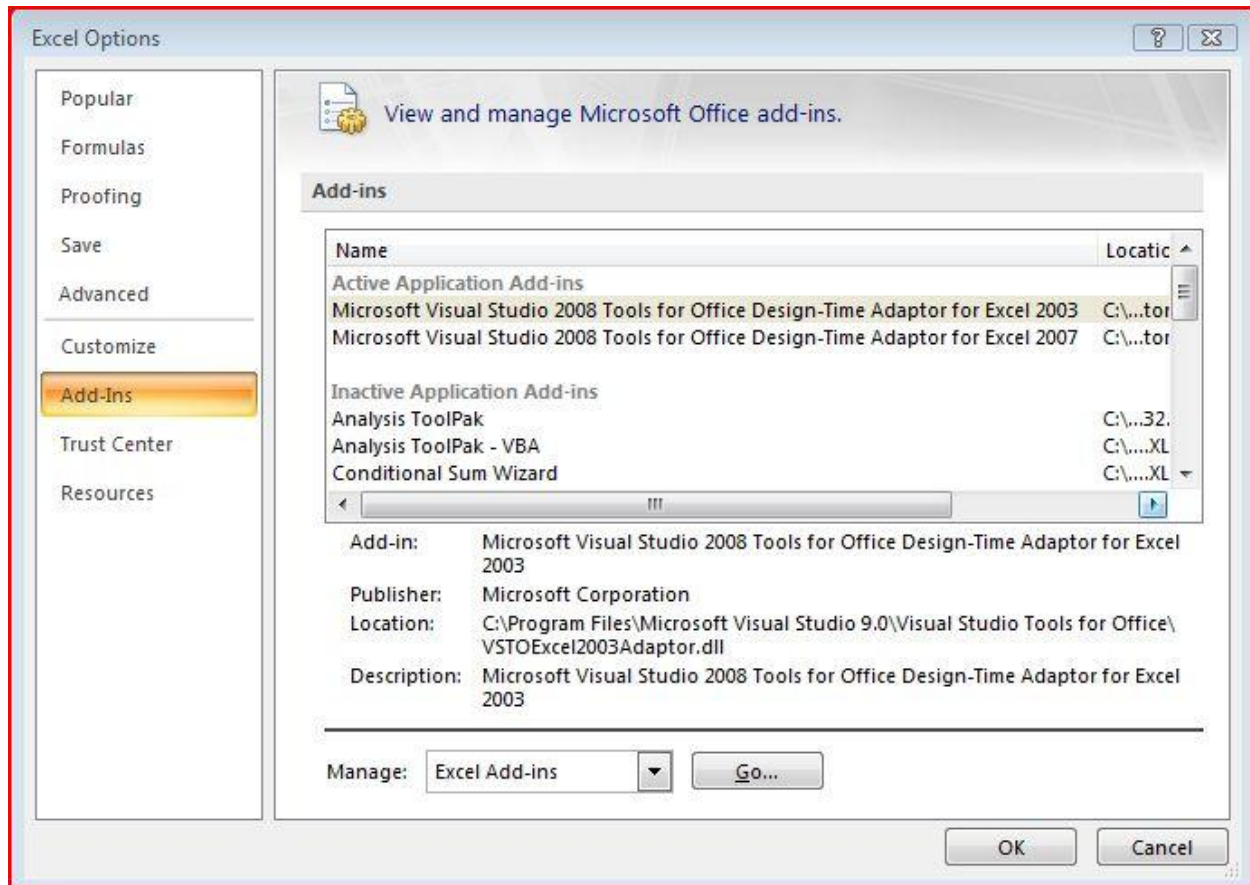


## Using the Veg Guide Summary in Excel 2007

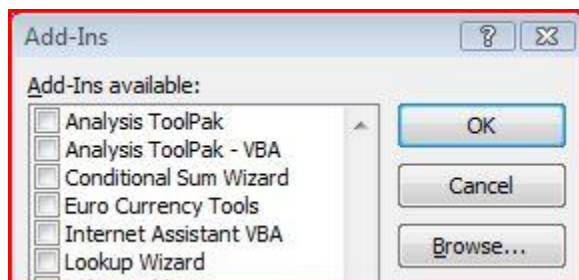
Open Excel and click the button “Excel Options” in the lower right as seen in the picture below.



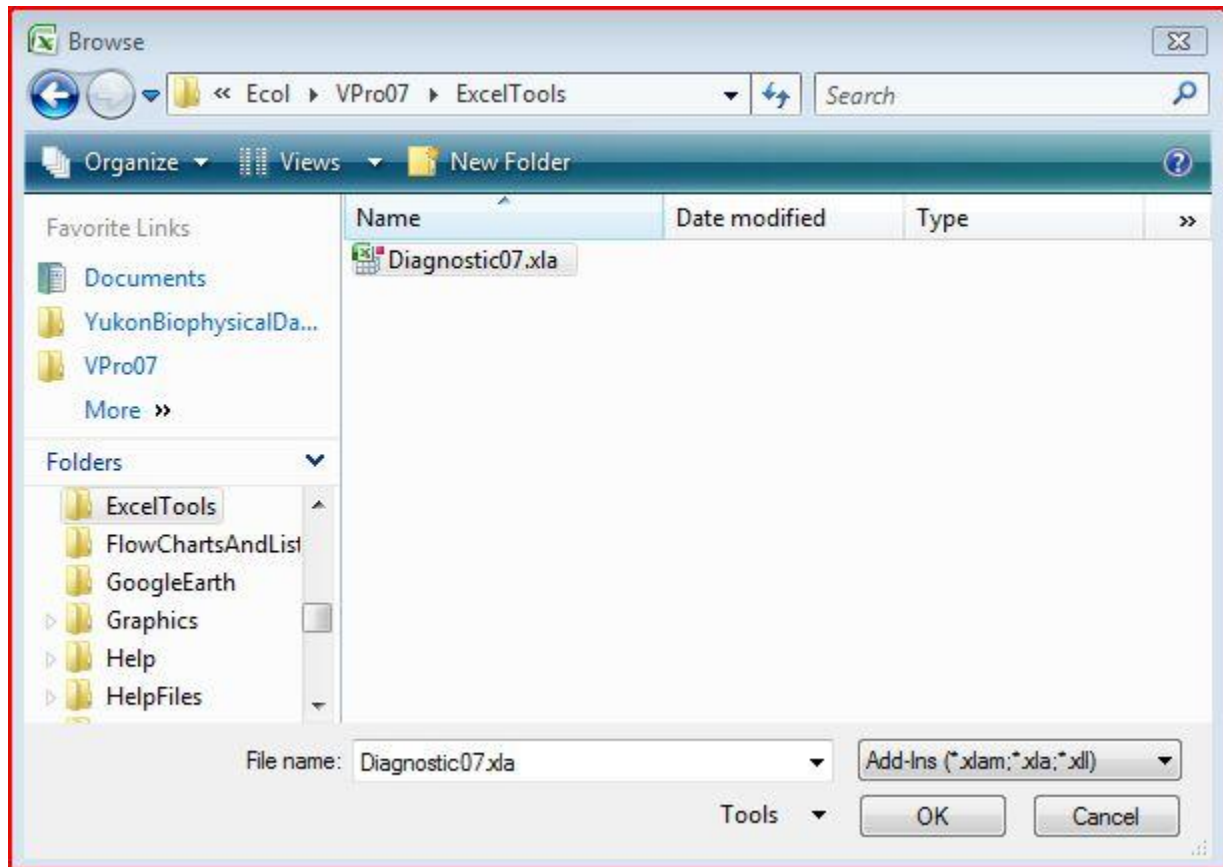
Click “Add-Ins” on the left pane, select “Excel Add-ins” in the drop-down box, and click the “Go...” button.



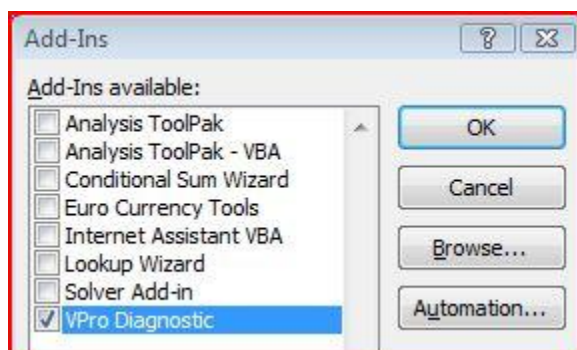
In the “Add-Ins” box, click the “Browse...” button.



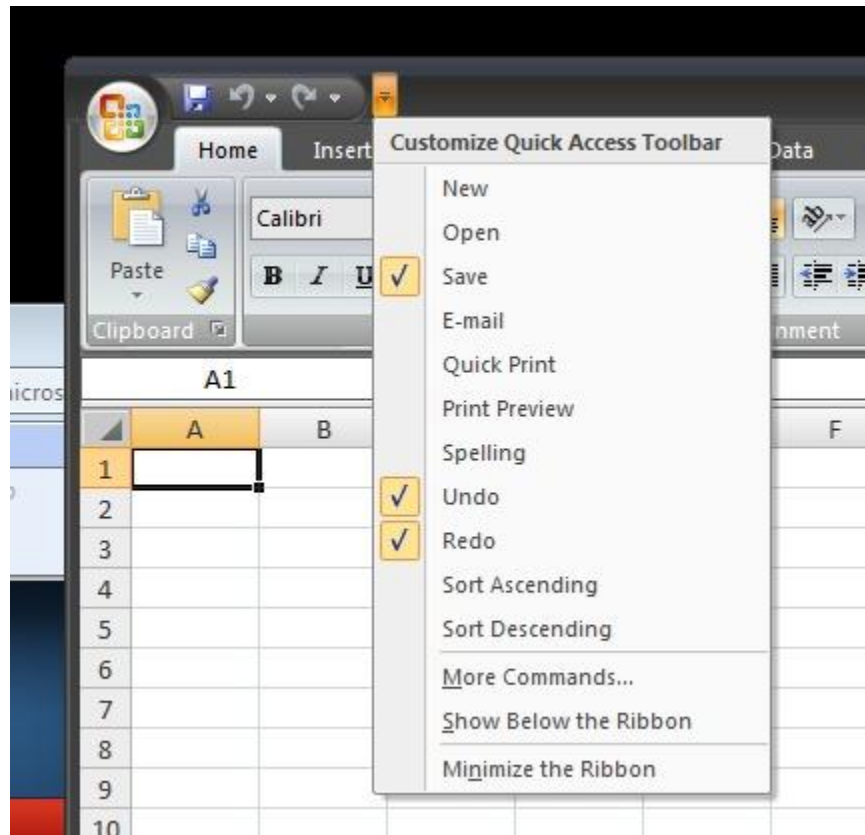
Navigate to your “ExcelTools” directory. You’ll find this in your “VPro07” directory. Select “Diagnostic07.xla” and click the OK button.



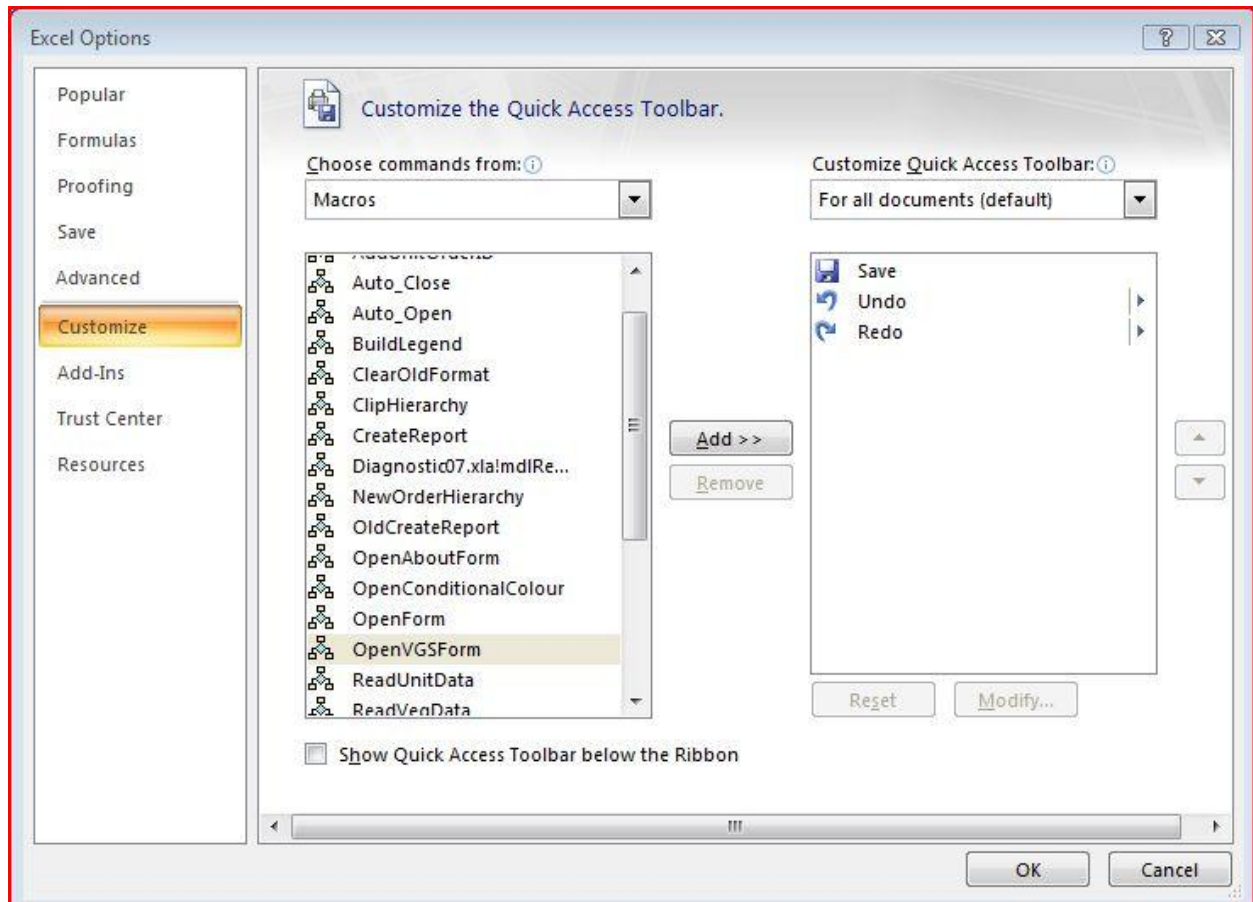
There should now be a “VPro Diagnostic” entry in the list of available add-ins. Ensure it is checked.



We now have to add a button to call the Veg Guide tool. In the upper-left corner of Excel is the quick access toolbar; click the small down arrow on the right side of this toolbar. Click “More Commands...”



Click “Customize” in the left pane. Select “Macros” from the “Choose commands from:” pick list. Select “OpenVGSForm” and click the “Add...” button. Click “OK”.



You should now have a new button on your quick access toolbar. Clicking that button will open the “Veg Guide Summary Criteria” form.

Book1 [Compatibility]

Home Insert Page Layout Formulas Data Review View

Calibri

Paste

Clipboard

A1

A B

1

2

3

4

5

6

7

8

9

10

11

12

13

14

Veg Guide Summary Criteria

>= 50 Minimum species constancy to include in summary

>= 75 Black bar constancy

>= 50 Gray bar constancy

>= 0 Star constancy

>= 100 Six bar percent cover

>= 25 Five bar percent cover

>= 10 Four bar percent cover

>= 3 Three bar percent cover

>= 1 Two bar percent cover

< 1 One bar percent cover

☐ Store original value in comment

Format Summary About Quit