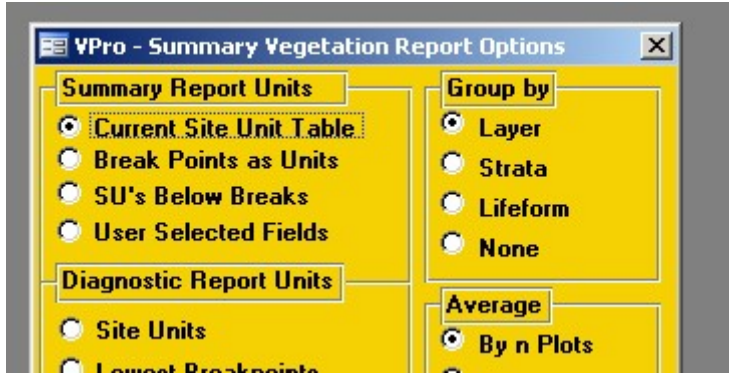
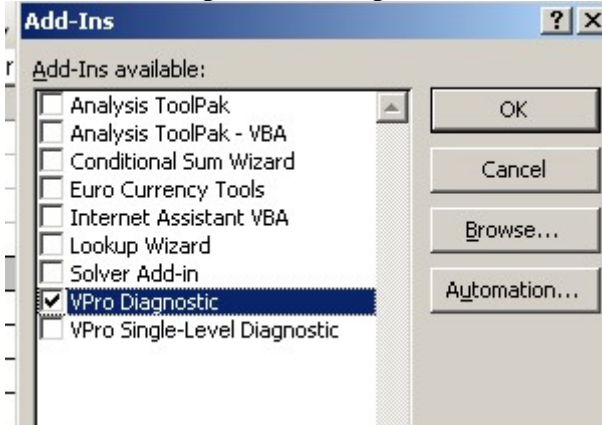


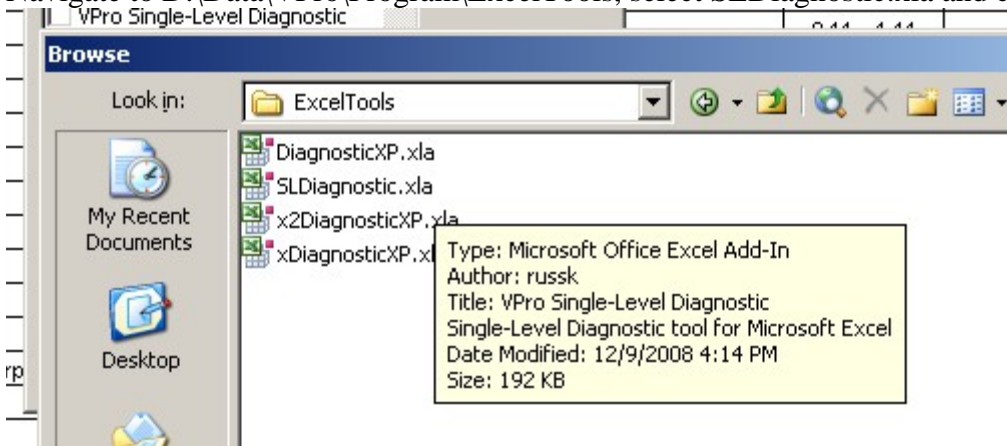
In VPro create a summary report using the current site unit table.



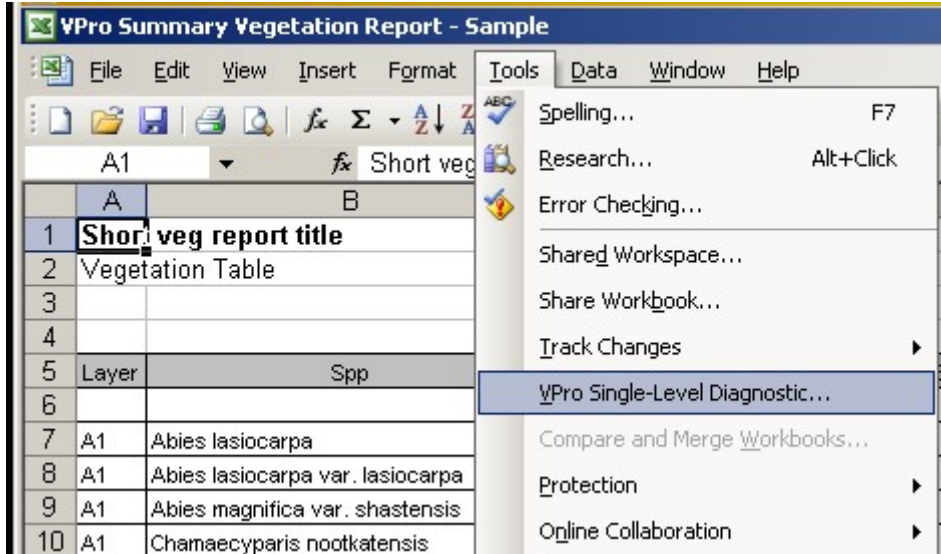
When Excel opens, click Tools/Add-Ins. If the single level diagnostic is in the list then select it and skip the next step, otherwise click browse.



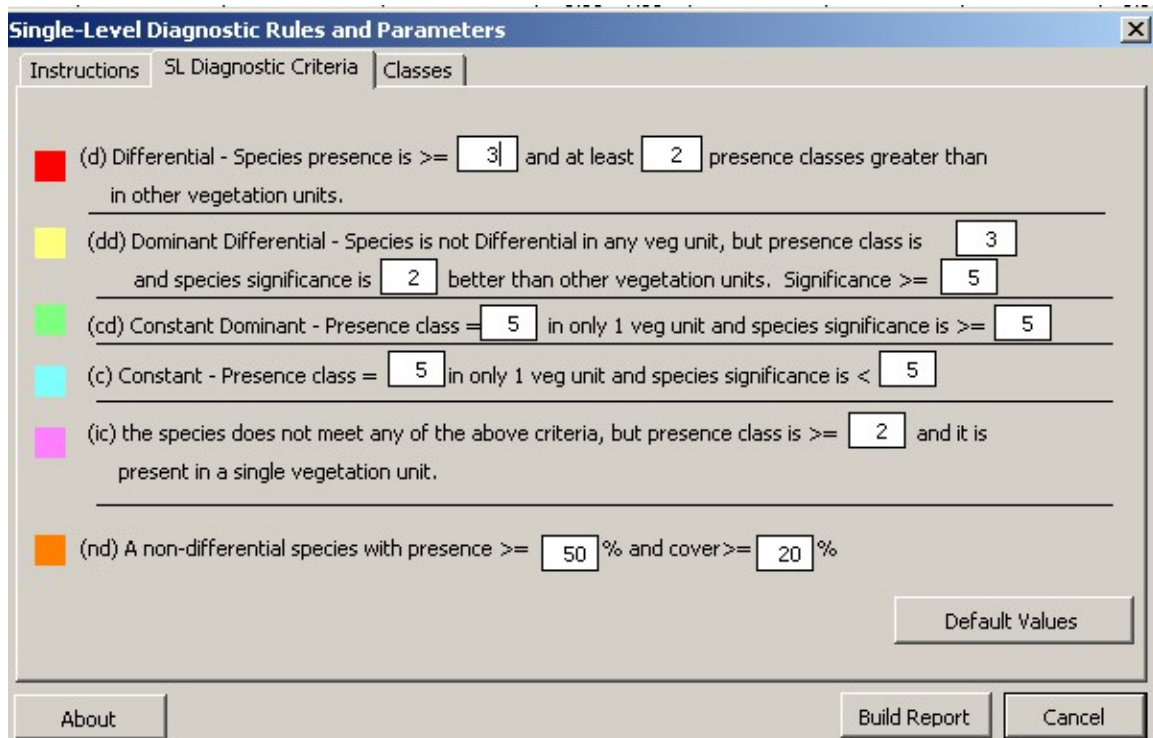
Navigate to D:\Data\VPro\Program\ExcelTools, select SLDiagnostic.xla and click OK.



Under Tools there should now be a new menu item VPro Single-Level Diagnostic. Click it.



On the Classes tab you can adjust significance and presence classes. On the SL Diagnostic Criteria tab you can adjust your diagnostic criteria and colours. To adjust the colours double-click the coloured box to the left of the criteria and select or create a colour.



With your VPro summary the active page in Excel, click Build Report.